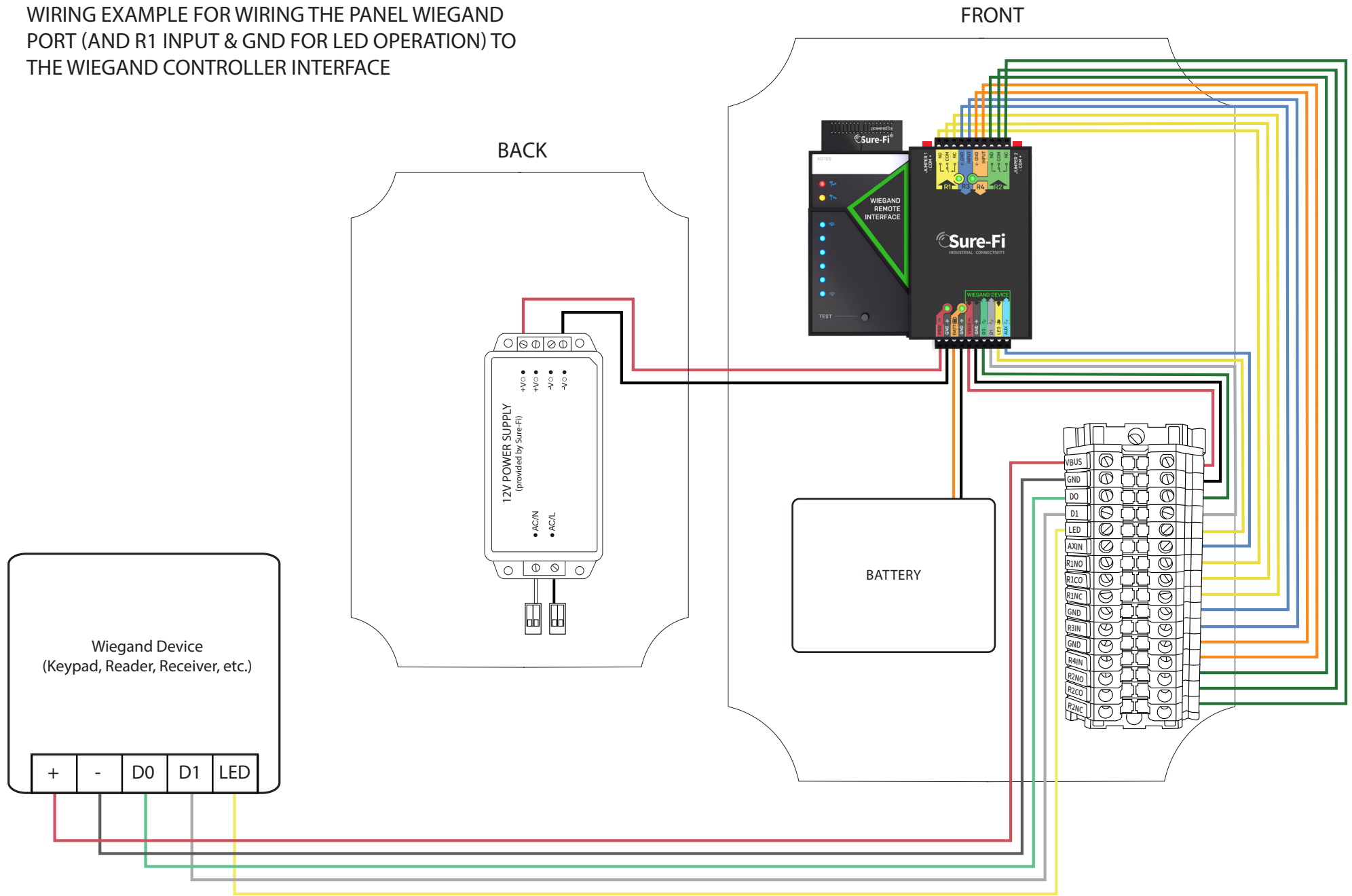


WIRING EXAMPLE FOR WIRING THE PANEL WIEGAND PORT (AND R1 INPUT & GND FOR LED OPERATION) TO THE WIEGAND CONTROLLER INTERFACE

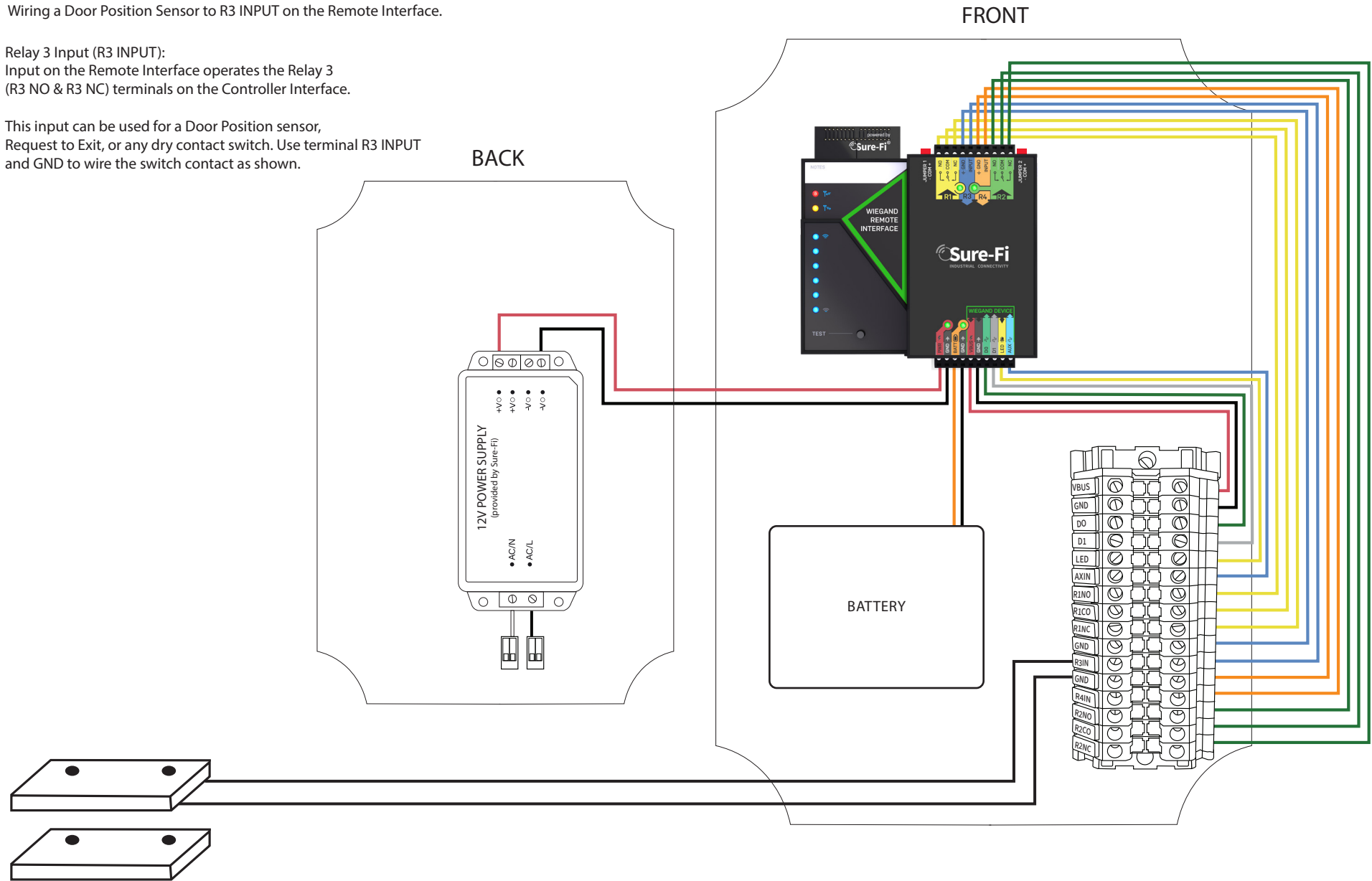


WIRING EXAMPLE FOR A DOOR POSITION SENSOR

Wiring a Door Position Sensor to R3 INPUT on the Remote Interface.

Relay 3 Input (R3 INPUT):
Input on the Remote Interface operates the Relay 3 (R3 NO & R3 NC) terminals on the Controller Interface.

This input can be used for a Door Position sensor, Request to Exit, or any dry contact switch. Use terminal R3 INPUT and GND to wire the switch contact as shown.

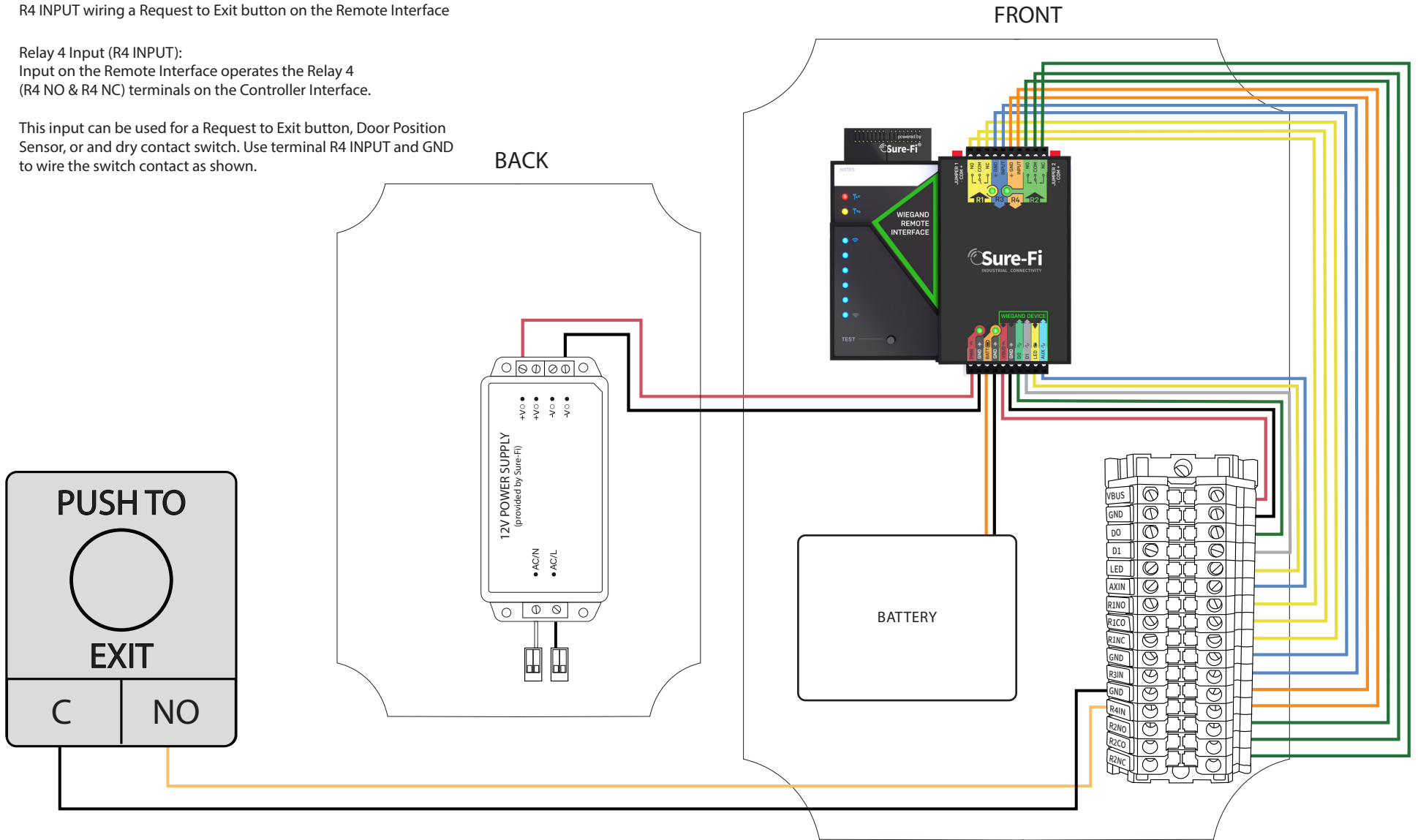


R4 INPUT REMOTE INTERFACE / RELAY 4 OUT CONTROLLER INTERFACE

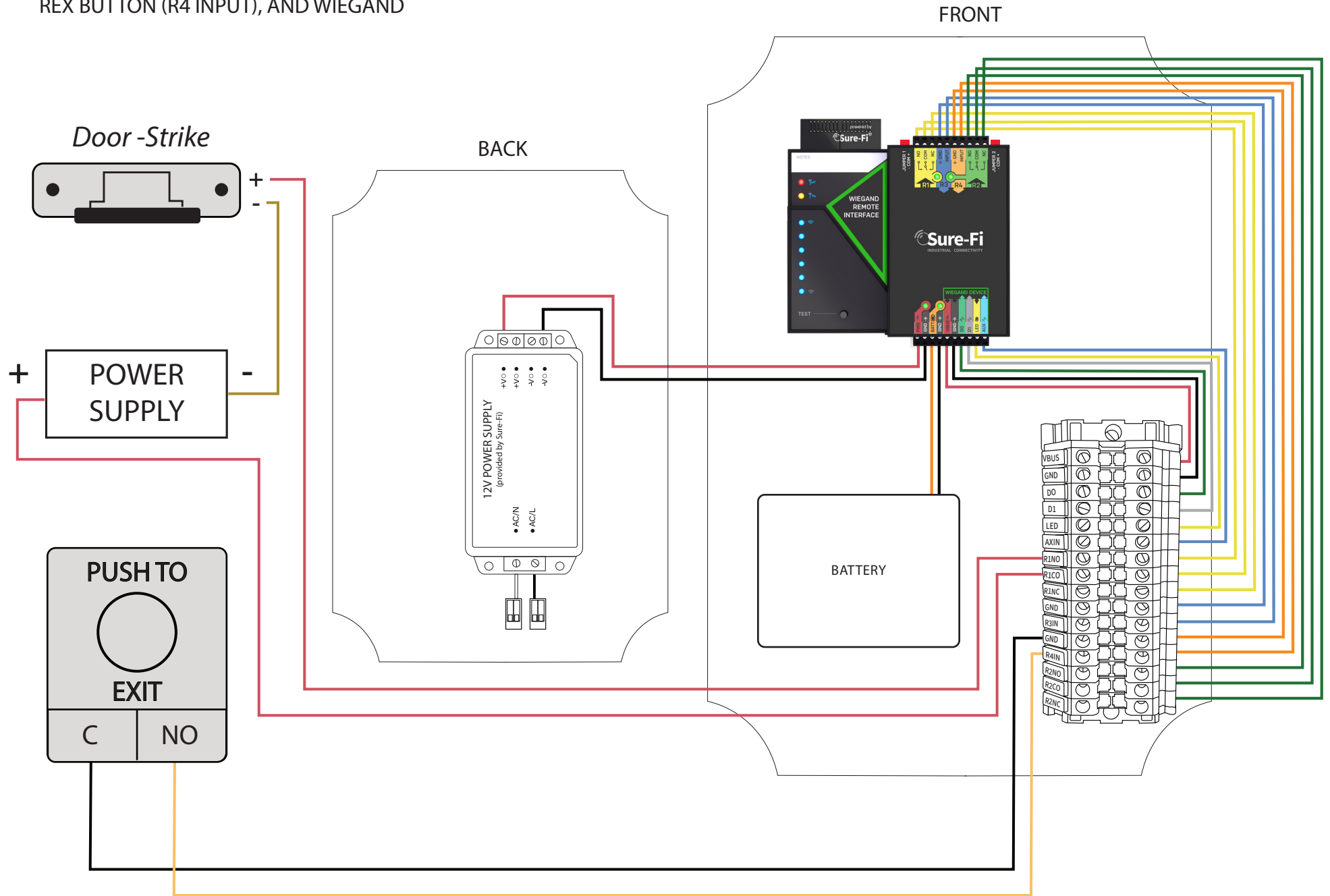
R4 INPUT wiring a Request to Exit button on the Remote Interface

Relay 4 Input (R4 INPUT):
Input on the Remote Interface operates the Relay 4 (R4 NO & R4 NC) terminals on the Controller Interface.

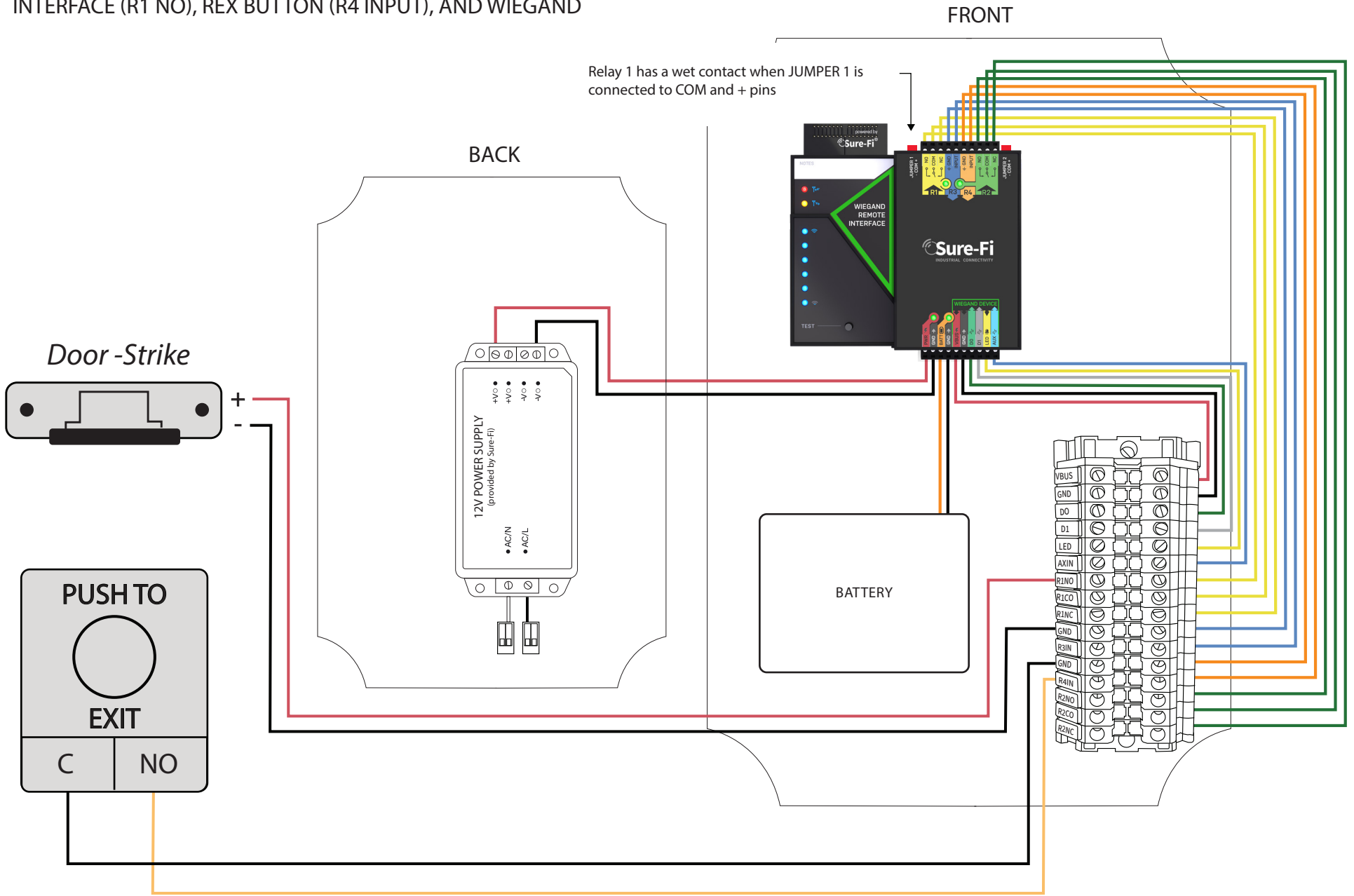
This input can be used for a Request to Exit button, Door Position Sensor, or and dry contact switch. Use terminal R4 INPUT and GND to wire the switch contact as shown.



REMOTE WIRING OF AN EXTERNALLY POWERED DOOR-STRIKE (R1 NO),
REX BUTTON (R4 INPUT), AND WIEGAND

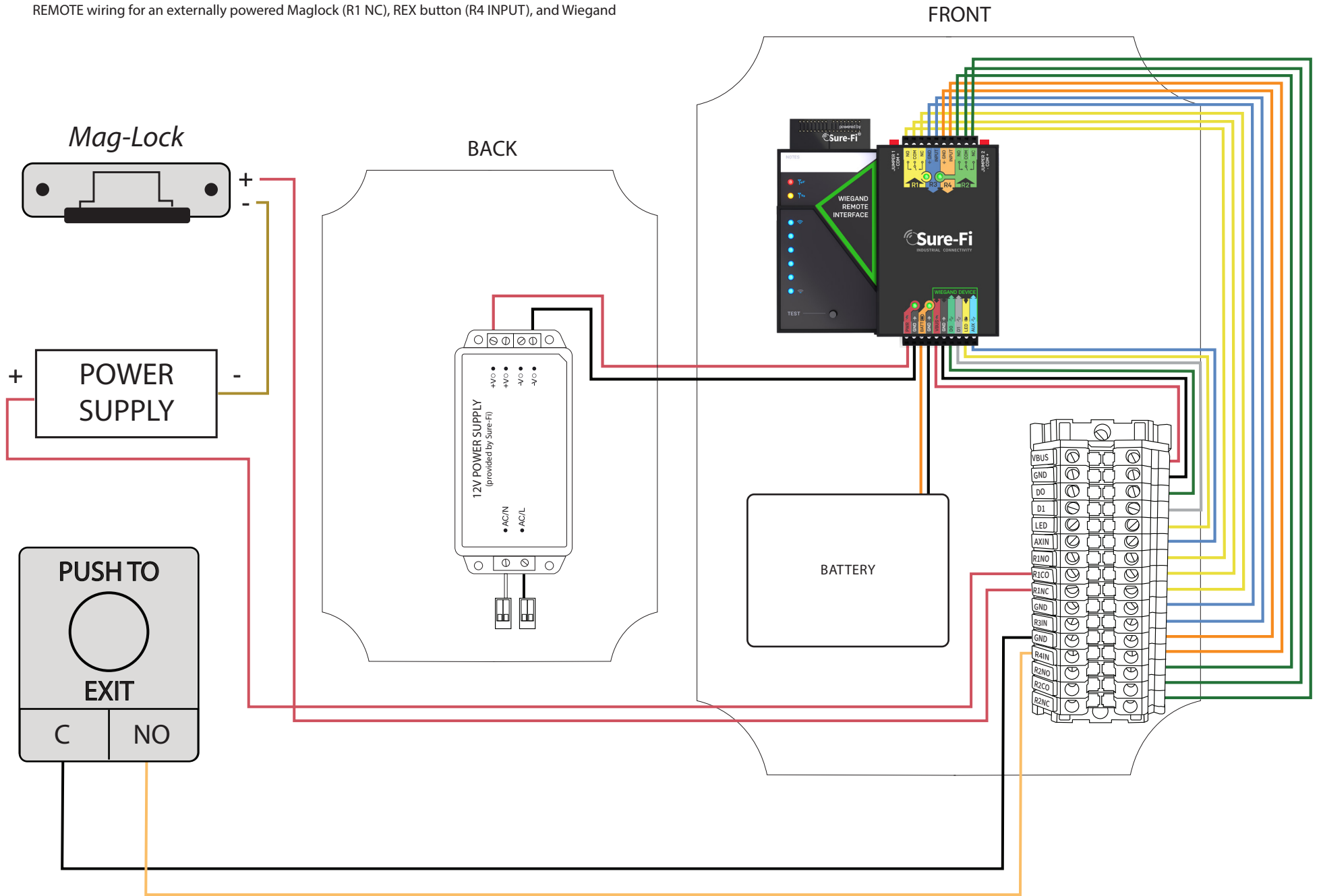


REMOTE WIRING OF A DOOR-STRIKE POWERED BY THE REMOTE INTERFACE (R1 NO), REX BUTTON (R4 INPUT), AND WIEGAND



WIRING EXAMPLE FOR MAG-LOCK

REMOTE wiring for an externally powered Maglock (R1 NC), REX button (R4 INPUT), and Wiegand



WIRING EXAMPLE FOR GATE OPERATOR, REX, AND WIEGAND

REMOTE wiring for a Gate Operator (R1 NO), REX button (R4 INPUT), and Wiegand device.

